



GAC MARINE L.L.C.
 PO Box 8101
 Abu Dhabi
 United Arab Emirates

Tel +971 2 501 4900
 Fax +971 2 550 2895
 Email marine.ae@gac.com
 Web www.gac.com



GAC 187 FLAT TOP BARGE

GENERAL:

Built	P.T. Jaya Asiatic Shipyard, Batam, Indonesia, 2001
Flag	Panama
Class	B.V.

MAIN DIMENSIONS:

Length Overall	54.86 m
Beam Moulded	16.76 m
Depth Moulded	3.66 m
Draft: Designed loaded	2.90 m
Draft: Light	0.64m

TONNAGE:

GRT	855 tons
NRT	256 tons
DWT	2,000 tons
Deck Capacity	10 tons / m ²

PLATING SCANTLINGS:

Deck	16.0 mm
Bottom	11.5 mm
Side	16.0 mm
Bulkhead	9.0 mm

NO. OF BULKHEADS:

Longitudinal	2
Transverse	4

NO. OF STANCHIONS:

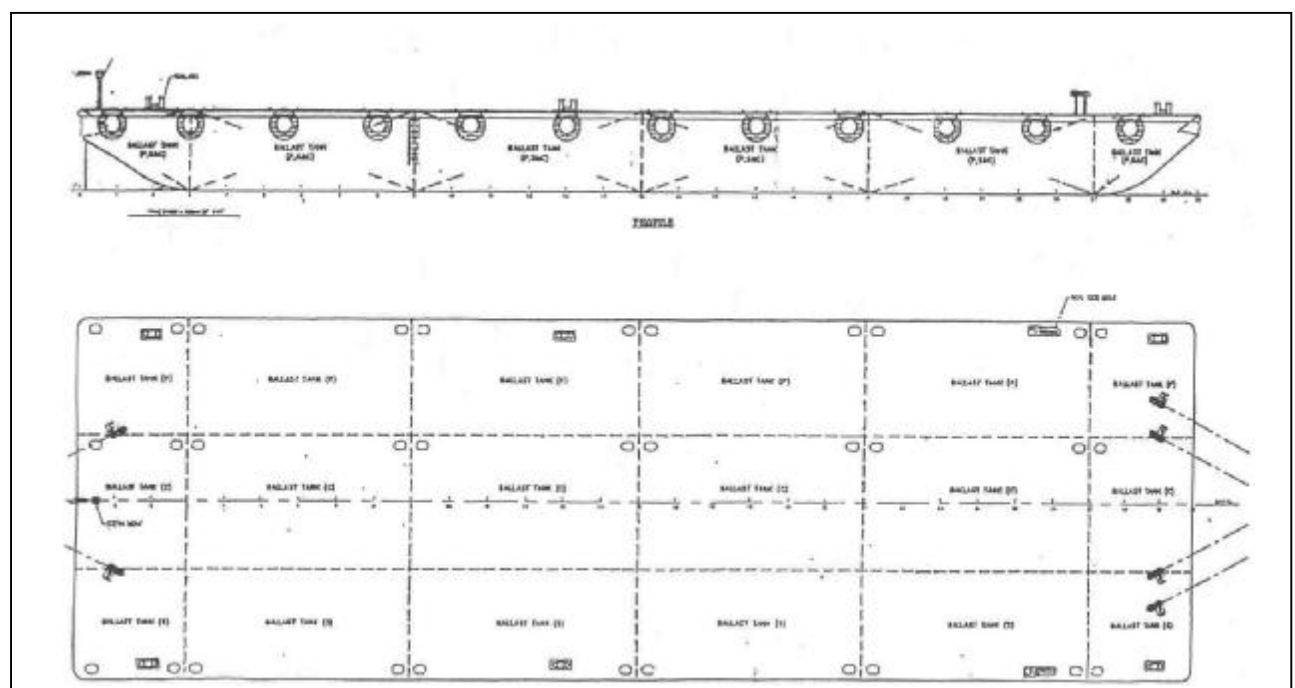
28

NO.OF MOORING BOLLARDS:

2 x 4 Double mooring bits

TOWING BITS:

2 Smit towing bits at forward end



This vessel specification is given in good faith and assumed to be correct but is not guaranteed